

BUILDING A MOVEMENT POWERED BY POSSIBILITIES

# MENTORING

# *amplifies*



**MENTOR**  
NEBRASKA

**FY 2020**

# ANNUAL REPORT



**Dear Stakeholders,**

In a year of many changes, the impact of the COVID-19 pandemic and racial injustices exposed in communities across the U.S. have amplified the importance and the critical need for mentoring. MENTOR Nebraska responded by fine-tuning strengths of our work and placed resources in the areas of greatest need. Every day we experience new opportunities that demonstrate the urgency of our work.

For example, you may not realize that MENTOR Nebraska's Success Mentors and STRIVE refugee initiatives are the only in-school mentoring programs that Omaha Public Schools allowed this past year because of the pandemic. Much like our mentoring partners in the field, we are very worried about the social and emotional needs of our students and these school-based models incorporate urgent strategies that support growth in these non-cognitive competencies.

Additionally, did you know that our Youth Initiated Mentoring work is doubling in size? We are now for the first time ever going to be accepting referrals not only from the juvenile justice institutions—but also from the Omaha Home for Boys, Child Saving Institute, Boys Town South, and Project Harmony to serve more system-impacted youth.

Our partner CEOs have told us they are grateful for the work we are doing to bring a stronger focus on equity and inclusivity in our sector. While this has been our focus for many years, we are committed to it more than ever before. Our new "Combating White Saviorism" training and Black Youth Town Hall webinar, plus related training opportunities, have proven to be important guideposts in our quest to better serve our youth. The MENTOR Nebraska team now better reflects these values that we teach.

Our statewide footprint continues to expand through in-school mentoring partnerships with Omaha, Lincoln and Grand Island public school districts and our newest member organizations Heartland Big Brothers Big Sisters (Lincoln), Big Brothers Big Sisters of Central Nebraska (Grand Island), Big Pals Little Pals (Columbus), and Community Connections Mentoring Program (North Platte). In total, MENTOR Nebraska has 18 Tier 1 members and a pipeline of many more that will become formal partners in the coming year.

There is a lot of work to be done – now more than ever – but we're looking forward to tackling it head on with our partners in the mentoring sector. Thank you for joining us in these efforts.

Warm regards,



*Melissa Mayo*  
**Melissa Mayo**  
Executive Director



*Matt Enenbach*  
**Matt Enenbach**  
Board President



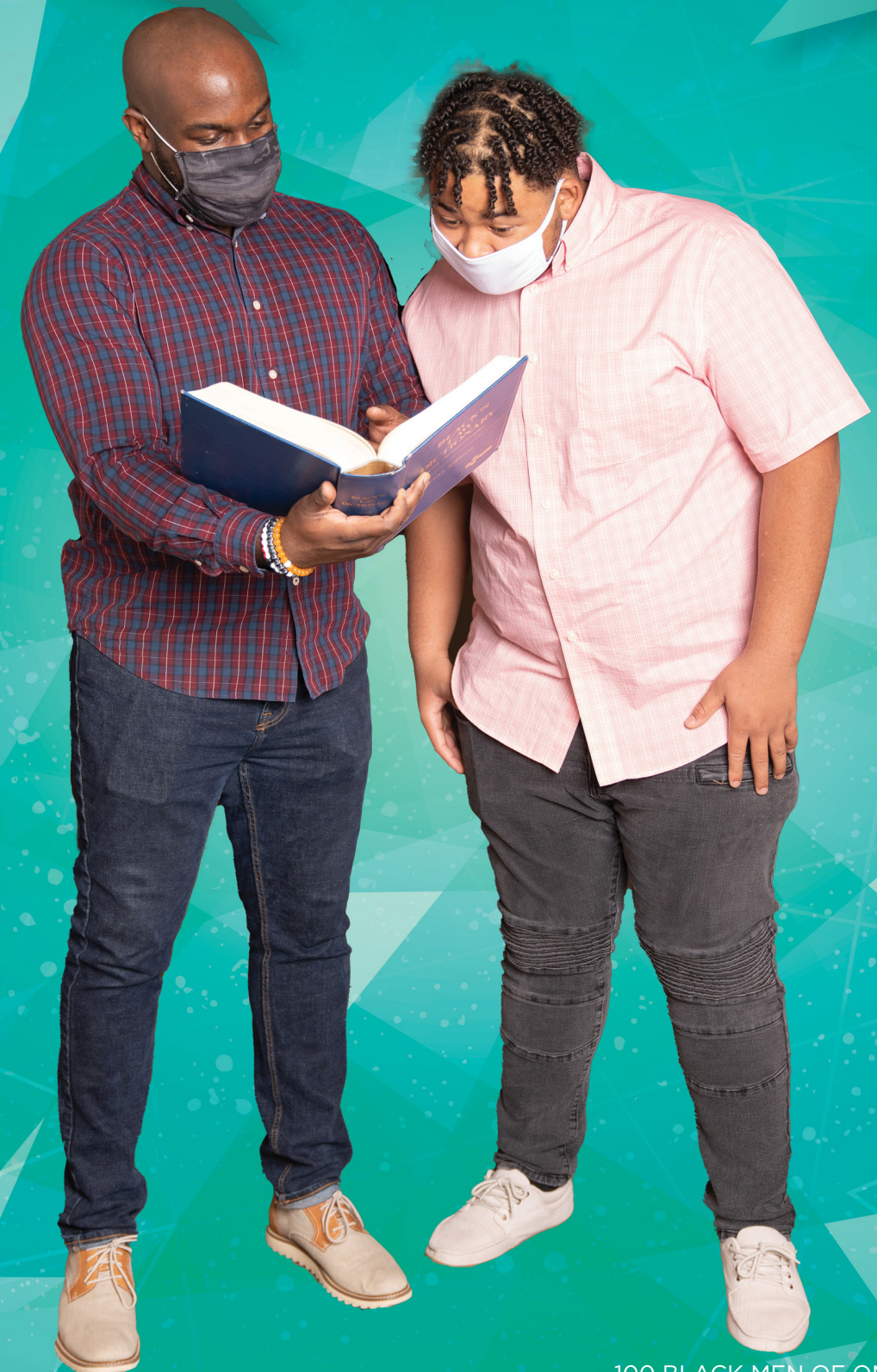
*Chris Rodgers*  
**Chris Rodgers**  
Past Board President

## VISION

MENTOR Nebraska's vision is for every young person to have the supportive relationships they need to grow and develop into thriving, productive, and engaged adults.

## MISSION

MENTOR Nebraska fuels the quality and quantity of mentoring relationships, strengthens collaboration, and advocates for mentoring.





## WE ARE CHAMPIONS FOR YOUTH

**Brought innovation to the mentoring sector** by implementing models of mentoring to reach underserved youth:



**Success Mentors supports chronically absent students** in Grand Island Public Schools, Millard Public Schools, and Omaha Public Schools by matching the students with a mentor inside the school



**Youth Initiated Mentoring supports juvenile justice involved youth** by matching them with trusted adults they already have in their lives



**Project STRIVE supports newly arrived refugee youth** in Grand Island Public Schools, Omaha Public Schools, and Lincoln Public schools by connecting them mentors and activities to increase civic engagement

## WE ARE COMMITTED TO DIVERSITY, EQUITY & INCLUSION



**Led trainings** on Combatting White Saviorism, Mentoring Girls of Color, and Mentoring Refugee Youth



**Amplified Black youth voices** by facilitating a Black Youth Town Hall



**Increased staff diversity** to reflect young people being served



**Supported grassroots mentoring efforts** led by refugees, immigrants, and Black led organizations with best practices to build sustainable programs

## WE ARE CAPACITY BUILDERS & CONNECTORS



**Led 49 no-cost trainings** including Social Emotional Learning, Trauma Informed Care, Screening Volunteers, Best Practices of Mentoring, and Virtual Mentoring



**Trained 587+ youth-serving professionals and mentors**



**Provided no-cost consultation to 20+ youth-serving programs** to increase the number, quality, and safety of mentoring relationships



**Connected the Nebraska mentoring sector** by facilitating monthly virtual meetings



**Led advocacy efforts** for state and federal funding to serve more youth



**Coordinated 29 food drives and 2,000+ volunteer hours** to distribute food packages to families in 2020

## WE ARE CHANGE AGENTS



**Collected and analyzed data** to identify gaps in youth being served



**Increased the number of juvenile justice youth being matched with mentors by 50%** in the past year



**Increased the number of youth in North Omaha Schools being served with mentors by 69%** in the past year

# TIER I PARTNER MEMBERS

Partner Members have demonstrated they are utilizing research-based mentoring practices in their programs. They participate in statewide data collection efforts and complete the National Quality Mentoring System (NQMS). Partner Members receive the highest level of benefits including no-cost background checks for all mentors, a data collection and case management system, access to statewide recruitment activities, and opportunities for funding support.



- 100 BLACK MEN OF OMAHA – Young Men Mentoring Institute (Omaha)
- ACE MENTOR PROGRAM (Omaha)
- BIG BROTHERS BIG SISTERS OF CENTRAL NEBRASKA (Grand Island)
- BIG BROTHERS BIG SISTERS LINCOLN (Lincoln)
- BIG BROTHERS BIG SISTERS OF THE MIDLANDS (Omaha)
- BIG PALS LITTLE PALS (Columbus)
- THE BIKE UNION – Mentoring Project (Omaha)
- COMMUNITY CONNECTIONS – Mentoring Program (North Platte)
- GIRLS INC. OF OMAHA – Pathfinders (Omaha)
- GRAND ISLAND PUBLIC SCHOOLS – Success Mentors & STRIVE (Grand Island)
- KIDS CAN COMMUNITY CENTER – Mentoring Program (Omaha)
- LINCOLN PUBLIC SCHOOLS – STRIVE (Lincoln)
- MILLARD PUBLIC SCHOOLS – Success Mentors (Omaha)
- OLLIE WEBB CENTER, INC. – Just Friends (Omaha)
- OMAHA PUBLIC SCHOOLS – Success Mentors & STRIVE (Omaha)
- PARTNERSHIP 4 KIDS – Group Mentoring Program (Omaha)
- RELEASE INC. – Mentoring Program (Omaha)
- YOUTH EMERGENCY SERVICES – Mentoring Program (Omaha)



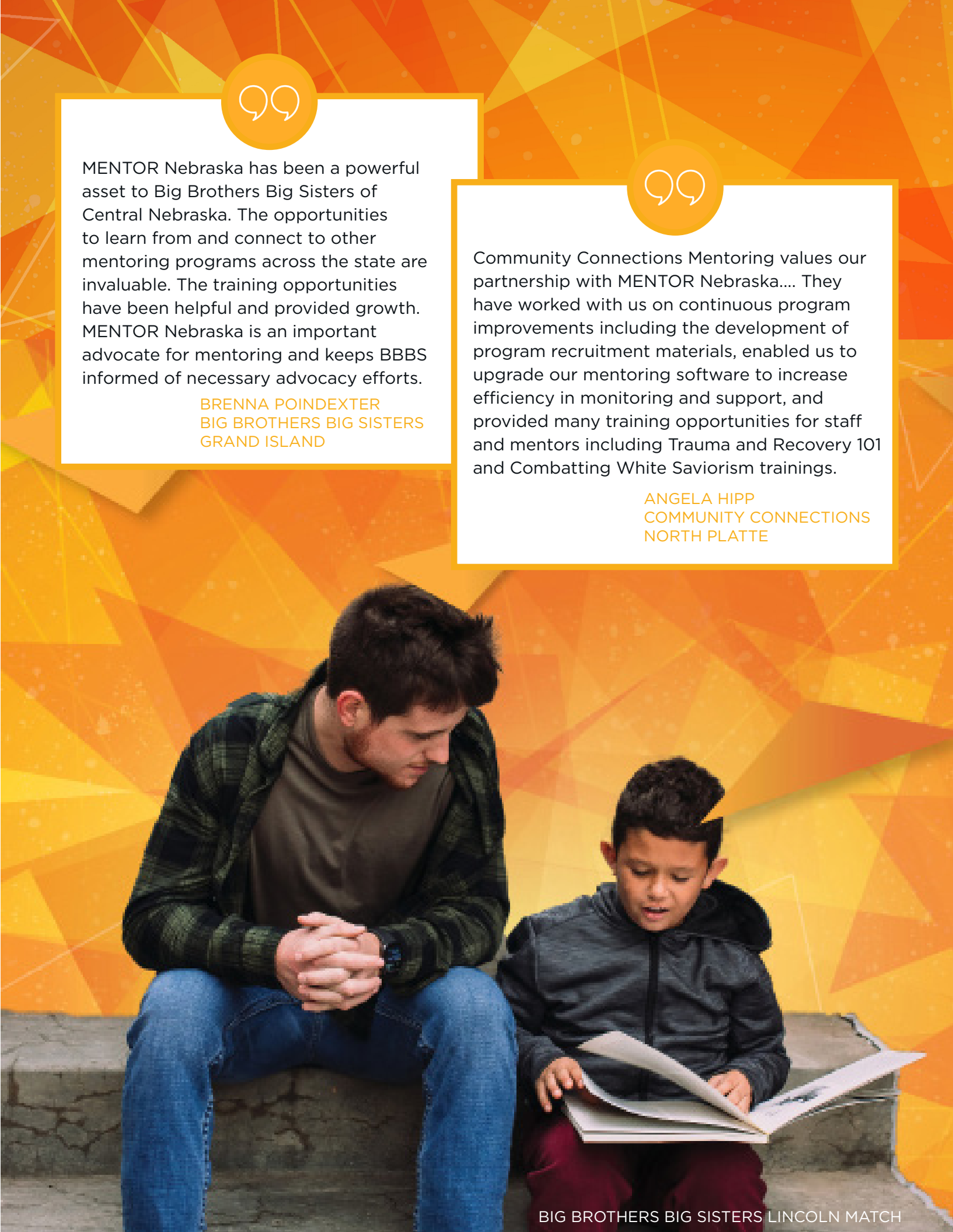
MENTOR Nebraska has been a powerful asset to Big Brothers Big Sisters of Central Nebraska. The opportunities to learn from and connect to other mentoring programs across the state are invaluable. The training opportunities have been helpful and provided growth. MENTOR Nebraska is an important advocate for mentoring and keeps BBBS informed of necessary advocacy efforts.

BRENNA POINDEXTER  
BIG BROTHERS BIG SISTERS  
GRAND ISLAND



Community Connections Mentoring values our partnership with MENTOR Nebraska.... They have worked with us on continuous program improvements including the development of program recruitment materials, enabled us to upgrade our mentoring software to increase efficiency in monitoring and support, and provided many training opportunities for staff and mentors including Trauma and Recovery 101 and Combatting White Saviorism trainings.

ANGELA HIPPI  
COMMUNITY CONNECTIONS  
NORTH PLATTE



BIG BROTHERS BIG SISTERS LINCOLN MATCH



DONORS \$20,000+

- Douglas County, Community-Based Aid  
Holland Foundation  
The Lozier Foundation  
NE Dept. of Health & Human Services  
NOVO Foundation
- Peter Kiewit Foundation  
ServeNebraska  
The Sherwood Foundation  
Weitz Family Foundation  
William & Ruth Scott Family Foundation

DONORS \$1,000 - \$19,999

- Access Bank  
Annette & Paul Smith Charitable Fund  
Baird Holm  
Bland Cares Foundation  
Burlington Capital  
City of Omaha  
Cline Williams  
Matthew Enenbach  
First National Bank of Omaha  
Fraser Stryker  
Deryl Hamann  
J&J Clough Foundation
- Kiewit Corporation  
Kutak Rock  
Lamp Rynearson  
Mammel Family Foundation  
Mutual of Omaha  
Omaha Public Power District  
One Source Inc.  
TC Energy  
University of Nebraska Medical Center  
UNO College of Education  
Valmont Foundation

DONORS UP TO \$999

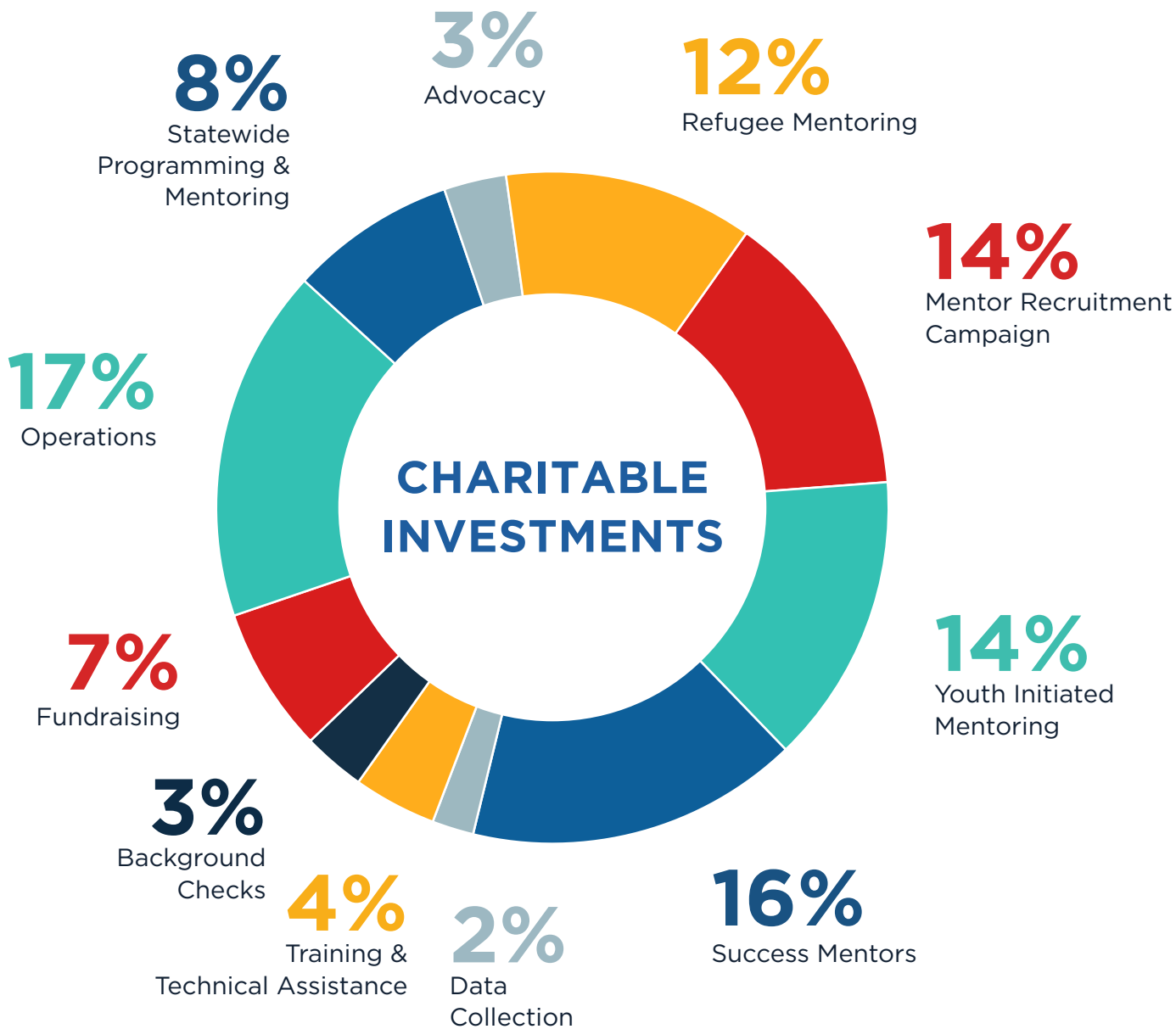
- Ace Pipe Cleaning  
American Family Insurance Foundation  
Anonymous  
Brad & Ann Ashford  
Jeremy Christensen  
Community Services Fund of Nebraska  
Engineering & Construction Innovation, Inc.  
Daniel Gutman  
Kids Can Community Center
- Marty Martinez  
Susan Mayberger  
Melissa Mayo  
Joe & Deborah Neary  
Omaha Performing Arts  
Kari O'Neill Potts  
Jeri Regan  
Rick Spellman

IN-KIND DONORS

- Baird Holm  
Borsheims Fine Jewelry & Gifts
- KETV NewsWatch 7  
Security National Bank



HOW INVESTMENTS ARE ALLOCATED:







## PARTNERS IN EDUCATION

GRAND ISLAND PUBLIC SCHOOLS  
LINCOLN PUBLIC SCHOOLS  
MILLARD PUBLIC SCHOOLS

OMAHA PUBLIC SCHOOLS  
RALSTON PUBLIC SCHOOLS

## PARTNERS IN CHANGE

CITY OF OMAHA  
DOUGLAS COUNTY  
THE EMPOWERMENT NETWORK  
GREATER OMAHA CHAMBER OF COMMERCE  
MENTOR NATIONAL  
MY BROTHER'S KEEPER



## 2020 MENTORING AWARDS



**BUSINESS OF THE YEAR**  
University of Nebraska Medical Center



**MENTOR OF THE YEAR**  
Erica McGruder, Partnership 4 Kids

## STAFF



**Melissa Mayo**  
Executive Director



**Karima Al-Absy**  
Advancement and  
Quality Assurance Manager



**Monica Dixon**  
Program Manager



**Marisa Hattab**  
Training and Partnership  
Development Manager



**Teresa Riesberg**  
Marketing & External Affairs  
Manager



**Keenan Tomlinson**  
Mentoring Coordinator

## BOARD MEMBERS

**Matthew Enenbach, Board President**  
Kutak Rock LLP  
**Kari O'Neill Potts, Board Vice President**  
Valmont Industries  
**Jeremy Christensen, Board Secretary**  
Baird Holm LLP  
**Justin Frauendorfer, Board Treasurer**  
Bland & Associates  
**Scott Focht, Member At-Large**  
Omaha Public Power District  
**Chris Rodgers, Past Board President**  
Douglas County & Creighton University

**George Achola, Burlington Capital**  
**Judge Vernon Daniels, Douglas County**  
**Moniki Gunn, CHI Health**  
**Greg Gonzalez, Omaha Police Dept.**  
**Daniel Gutman, Fraser Stryker PC LLO**  
**Kevin Langin, First National Bank**  
**Dr. Amanda Levos, Grand Island Public Schools**  
**Dani McCawley, SilverStone Group**  
**Juan Padilla, Omaha Community Foundation**  
**Carol Russell, Community Volunteer**  
**Betsy Vidlak, Community Action Partnership of Western Nebraska**

## TRUSTEE EMERITUS MEMBERS

**Josh Barte, Past Board President**  
**John Ewing, Past Board Vice President**  
**Julie Hefflinger, Past Board President**  
**Daniel Padilla, Past Board President**

**Ashley Robinson, Past Board President**  
**Rick Spellman, Past Board Member**  
**Mike Yanney, Founder**





GIRLS INC. OF OMAHA MATCH



**MENTOR**  
NEBRASKA

**JOIN THE MENTORING MOVEMENT:**

402-715-4164 | [info@mentornebraska.org](mailto:info@mentornebraska.org)

[www.MENTORNebraska.org](http://www.MENTORNebraska.org)

1111 N. 13th Street, Suite 126 | Omaha, NE 68102

Tax Status - 501(c)(3)