



**MENTOR**  
NEBRASKA

# 2021 ANNUAL REPORT



GIRLS INC OF OMAHA

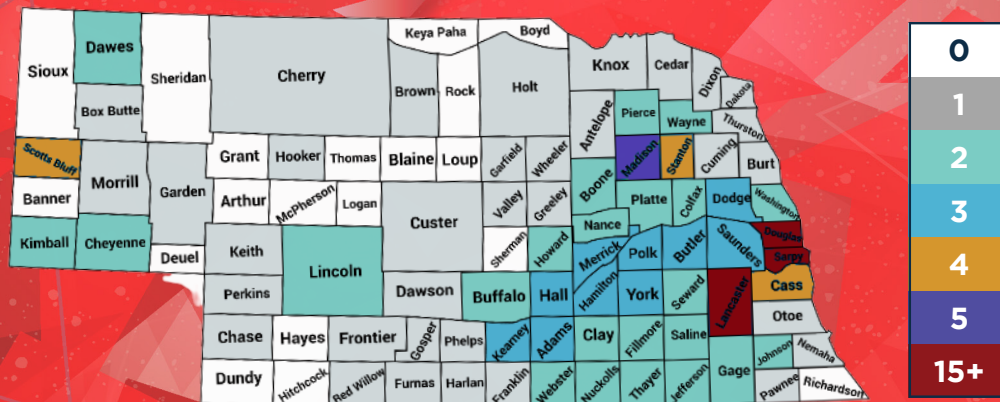


## NEW THIS YEAR

# MAPPING PROJECT

To help understand the state of mentoring in Nebraska, MENTOR Nebraska surveyed 60 organizations for our 2021 Mapping Project. Through a strengths-based questionnaire and analysis of county and school district data, the project estimates the size and scope of Nebraska's mentoring sector and details location, program design, objectives, audiences, community conditions, and areas for future growth. View the mapping report summary [here](#).

### # of Organizations Providing Mentoring by County



# CONSULTANTS

To strengthen the quality and effectiveness of mentoring, MENTOR Nebraska provides capacity building support to mentoring and youth-serving programs across the state. We expanded our reach this year by onboarding eight consultants to help provide no-cost consulting to programs.



SHARI  
COLLINS



**BRAXTON  
CROWDER**



**MARISA  
HATTAB**



**SALVADOR  
HERNANDEZ**



ANGELA  
HIPPI



**SUSAN  
MAYBERGER**



**DERNECIA  
PHILLIPS**



TESS  
STARMAN



# NEW THIS YEAR

## YIM EXPANSION

To support more young people involved in the juvenile justice system, MENTOR Nebraska is expanding our Youth Initiated Mentoring (YIM) program. We launched the country's first standalone YIM model at Charles Drew Health Center and will continue to work alongside community organizations across the state to implement the YIM model.



"We are so excited to launch the Youth Initiated Mentoring model at Charles Drew Health Center. The need for mentors has never been greater and this is a unique opportunity to transform the lives of young people while strengthening our community."

**KENNY MCMORRIS**

Charles Drew Health Center | Omaha



RELEASE INC.

## BOARD & STAFF

To expand MENTOR Nebraska's network and reach across Nebraska, we welcomed four new board members and two staff members. We will continue to intentionally add people who represent the communities we serve.



**MONIKI GUNN**  
Board | Omaha



**DR. AMANDA LEVOS**  
Board | Grand Island



**SUSIE OWENS**  
Staff | Omaha



**ELIZABETH SEACREST**  
Board | Lincoln



**FRED WHITTED**  
Staff | Omaha



**BETSY VIDLAK**  
Board | Scottsbluff

# OUR IMPACT

## VISION

MENTOR Nebraska's vision is for every young person to have the supportive relationships they need to grow and develop into thriving, productive, and engaged adults.

## MISSION

MENTOR Nebraska fuels the quality and quantity of mentoring relationships, strengthens collaboration, and advocates for mentoring.

MENTORING *amplifies*

## ADVOCACY



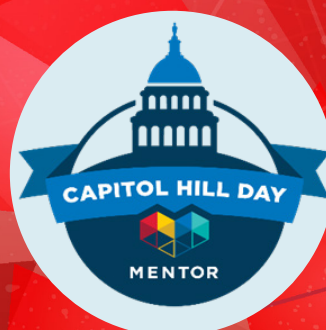
### Led advocacy efforts

for state and federal funding to serve more young people through mentoring



### Coordinated Capitol Hill Day

**30+ mentoring advocates** from Nebraska met with Members of Congress to talk about the importance of mentoring and discuss key legislation to support Nebraska's youth





## NO-COST TRAINING



### Led 57 no-cost trainings

- Combatting White Saviorism
- Supporting Refugee Mentors
- Cultural Competency
- Creating Equitable Outcomes
- Increasing Youth Voice
- Social Emotional Learning
- Trauma Informed Care
- Screening Volunteers
- Best Practices of Mentoring
- Virtual Mentoring
- STRIVE Refugee Mentoring
- Success Mentors



### Trained 734 youth-serving professionals and mentors



“MENTOR Nebraska provides Big Brothers Big Sisters Lincoln with valuable resources to provide top-notch community-based mentoring to our community. MENTOR Nebraska offers an astounding amount of training opportunities for BBBSL staff as well as our mentors (Bigs) that assist in the areas of cultural competencies, trauma-informed care, and social-emotional learning, just to name a few.”

**LAURA MATTHIAS**

Big Brothers Big Sisters Lincoln



“MENTOR Nebraska has been a great asset to the 100 Black Men of Omaha. From trainings on ‘Virtual Mentoring’ to ‘Social & Emotional Learning,’ our staff has been equipped with the tools to continue mentoring our Youth with Promise in an impactful way.”

**MARCUS BELL**

100 Black Men of Omaha



100 BLACK MEN OF OMAHA

# OUR IMPACT

## NO-COST CONSULTING



**Provided 350+ hours of no-cost consultation** to **15 youth-serving programs** to increase the number, quality, and safety of mentoring relationships

- ABOTURIBO 1972 (Omaha)
- Banister Leadership Academy (Omaha)
- Big Brothers Big Sisters of Central Nebraska (Grand Island)
- East African Development Association of Nebraska (Omaha)
- iCare Youth Service Inc (TX)
- International Council for Refugees and Immigrants, Inc. (Omaha)
- The Keys Foundation (Omaha)
- Kids Can Community Center (Omaha)
- Looks Like Us (Omaha)
- Mentoring Plus (Lincoln)
- Muscogee Creek (OK)
- Partnership 4 Kids (Omaha)
- University of Nebraska at Omaha (Omaha)
- Volunteers for Youth (OK)
- Youth Emergency Services (Omaha)



“MENTOR Nebraska provides great trainings and resources with the NQMS process to improve the quality of our mentoring program for staff and mentors. Through networking meetings, MENTOR Nebraska allows Kids Can to learn about other programs and their successes and (especially this past year during COVID) how other agencies were making changes to ensure their mentors and mentees could still meet in a safe environment.”

**STEPHANIE STICKELS**

Kids Can Community Center | Omaha



BIG BROTHERS BIG SISTERS LINCOLN



## INTENTIONAL MENTORING

### Brought innovation to the mentoring sector

by continuing to support intentional mentoring to reach underserved youth



#### Success Mentors

Supported **three school districts** serving **267 students with a history of chronic absenteeism**

- Grand Island Public Schools
- Millard Public Schools
- Omaha Public Schools



#### Youth Initiated Mentoring

Connected young people involved in the juvenile justice system with mentors by building partnerships with **four new referral sources**

- Charles Drew Health Center
- Omaha Home for Boys
- Child Saving Institute
- Project Harmony



#### STRIVE Refugee Mentoring

Served **132 newly arrived refugee students** through **five partnerships**

- Grand Island Public Schools
- International Council for Refugees and Immigrants, Inc.
- Lincoln Public Schools
- Omaha Public Schools
- TeamMates of Lincoln





“MENTOR Nebraska has been a wonderful tool for Big Pals-Little Pals. Because of our partnership with MENTOR Nebraska, we have implemented the Elements of Effective Practice for Mentoring. This has helped us build a strong foundation for our program and helped us implement new practices that ensure that our mentees are safe and receiving the maximum benefit from our program.”

**KARMEN THOMPSON**

Big Pals-Little Pals of Greater Columbus



“Community Connections Mentoring values our partnership with MENTOR Nebraska. Over the past year, MENTOR Nebraska has assisted us in completing the NQMS process to recognize that we are meeting the highest quality standards for a mentoring program in alignment with the Elements of Effective Practices for Mentoring. They have worked with us on continuous program improvements including the development of program recruitment materials, enabled us to upgrade our mentoring software to increase efficiency in monitoring and support, and provided many training opportunities for staff and mentors including Trauma and Recovery 101 and Combating White Saviorism trainings.”

**ANGELA HIPP**

Community Connections | North Platte





# OUR PARTNERS

## TIER I PARTNER MEMBERS

Partner Members have demonstrated they are utilizing research-based mentoring practices in their programs. They participate in statewide data collection efforts and complete the National Quality Mentoring System (NQMS). Partner Members receive the highest level of benefits including no-cost background checks for all mentors, a data collection and case management system, access to statewide recruitment activities, and opportunities for funding support.

**100 BLACK MEN OF OMAHA** – Young Men Mentoring Institute (Omaha)

**ACE MENTOR PROGRAM** (Omaha)

**\*BIG BROTHERS BIG SISTERS OF CENTRAL NEBRASKA** (Grand Island)

**BIG BROTHERS BIG SISTERS LINCOLN** (Lincoln)

**BIG BROTHERS BIG SISTERS OF THE MIDLANDS** (Omaha)

**\*BIG PALS LITTLE PALS** (Columbus)

**THE BIKE UNION** – Mentoring Project (Omaha)

**\*COMMUNITY CONNECTIONS** – Mentoring Program (North Platte)

**GIRLS INC. OF OMAHA** – Pathfinders (Omaha)

**INTERNATIONAL COUNCIL FOR REFUGEES AND IMMIGRANTS, INC.** (Omaha)

**\*KIDS CAN COMMUNITY CENTER** – Mentoring Program (Omaha)

**MENTORINGWORKS** (Hastings)

**OLLIE WEBB CENTER, INC.** – Just Friends (Omaha)

**PARTNERSHIP 4 KIDS** – Group Mentoring Program (Omaha)

**RELEASE INC.** – Mentoring Program (Omaha)

**\*YOUTH EMERGENCY SERVICES** – Mentoring Program (Omaha)

*\*Program completed NQMS in FY21*



## PARTNERS IN EDUCATION

Partners in Education work alongside MENTOR Nebraska to implement intentional mentoring initiatives, including Success Mentors and STRIVE Refugee Mentoring.

**GRAND ISLAND PUBLIC SCHOOLS** – Success Mentors & STRIVE (Grand Island)

**LINCOLN PUBLIC SCHOOLS** – STRIVE (Lincoln)

**MILLARD PUBLIC SCHOOLS** – Success Mentors (Omaha)

**OMAHA PUBLIC SCHOOLS** – Success Mentors & STRIVE (Omaha)

# OUR DONORS

## DONORS \$20,000+

Cooper Foundation  
Douglas County, Community-Based Aid  
Holland Foundation  
The Lozier Foundation  
MENTOR National

NE Dept. of Health & Human Services  
Peter Kiewit Foundation  
ServeNebraska  
The Sherwood Foundation  
William & Ruth Scott Family Foundation

## DONORS \$1,000 - \$19,999

Annette & Paul Smith  
Bland Cares Foundation  
City of Omaha  
Matthew Enenbach  
FNBO  
Fraser Stryker  
Justin Frauendorfer  
Julie Hefflinger  
Home Instead  
J&J Clough Foundation  
Kutak Rock

Lamp Ryneanson  
Metropolitan Utilities District  
Mutual of Omaha  
OneSource, Inc  
Omaha Public Power District  
SilverStone Group, a Hub International Company  
Vic Gutman and Associates  
Weitz Family Foundation  
Woods Charitable Fund  
Michael Yanney

## DONORS UP TO \$999

Karima Al-Absy  
American National Bank  
Whitney Baker  
Jeremy Christensen  
Community Services Fund of Nebraska  
Dawn Dreessen  
Scott Focht  
Greg Gonzalez  
Deann Grovijohn  
Daniel Gutman  
Marisa Hattab  
Carol Houchin  
Valerie Houchin  
Hydro-Klean  
Kevin Langin

Amanda Levos  
Marty Martinez  
Danielle McCawley  
Kristin Morgan  
Deborah & Joe Neary  
Robert Patterson  
Pave LLC  
Kari O'Neill Potts  
Chris Rodgers  
Carol & Rick Russell  
Erin & Joel Russell  
Schneider Electric  
Rick Spellman  
Betsy Vidlak  
Jay Warren-Teamer

## IN-KIND DONORS

Baird Holm  
Fun-Plex

KETV NewsWatch 7  
The Rose Theater



# OUR INVESTMENTS

**\$727,091**

**Total Expenses**

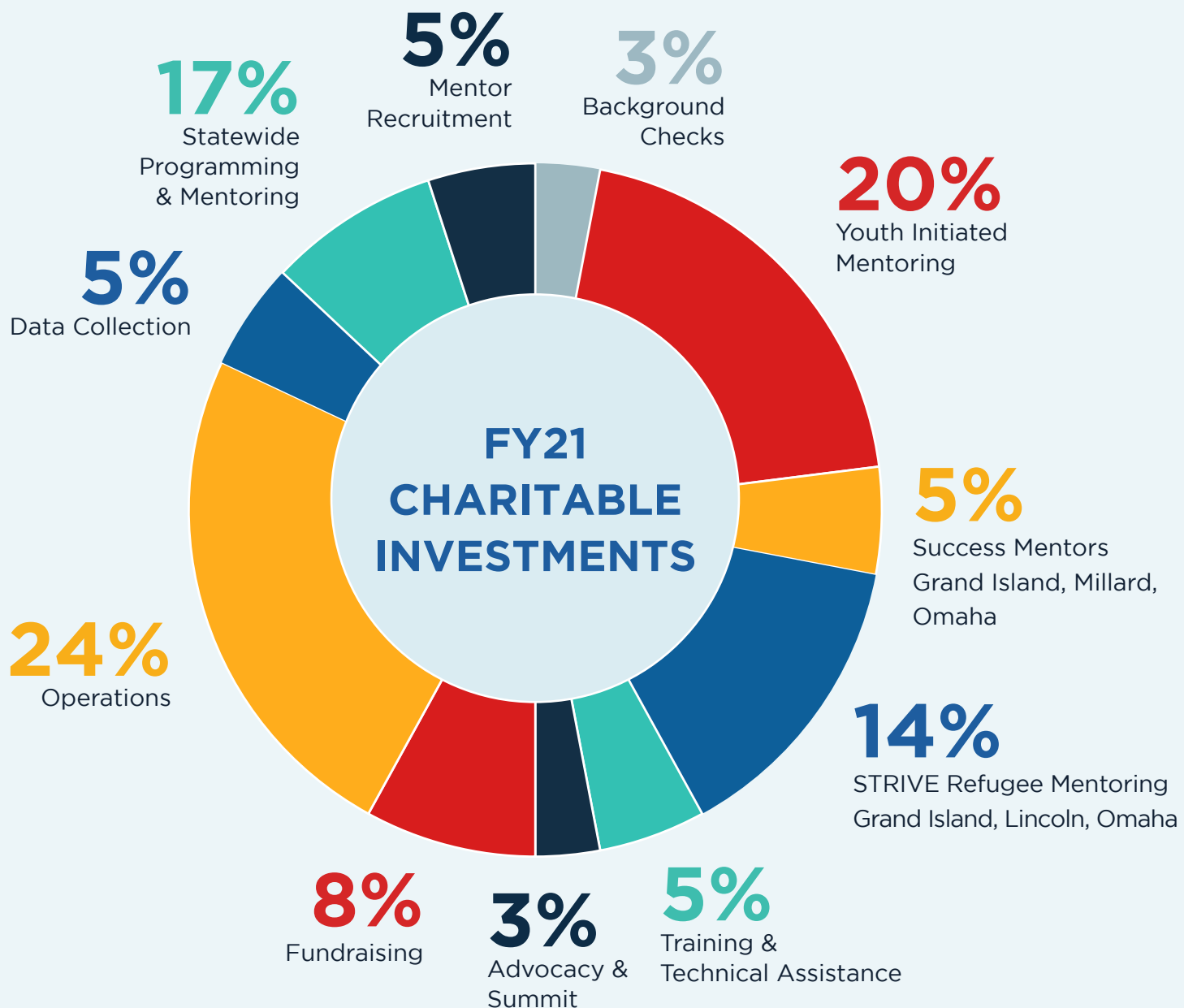
**\$898,567**

**Total Income**

**\$131,833**

**Net Assets**

End of Year



# EXCELLENCE IN MENTORING AWARDS

## 2021 YOUNG LEADER OF THE YEAR



**ZACH BRISNEHAN**

Big Brothers Big Sisters of Central Nebraska  
Grand Island



**NYANKOOR TIMOTHY**

Community Learning Centers - Civic Nebraska  
Lincoln

## 2021 MENTORING PRACTITIONER OF THE YEAR



**DAMIEN CORAN**

Partnership 4 Kids  
Omaha

## 2021 MENTOR OF THE YEAR



**ADRIAN FUENTES SANCHEZ**

Big Brothers Big Sisters of the Midlands  
Omaha



**MAHATMA LARGAESPADA**

Latino Center of the Midlands  
Omaha

## 2021 MENTORING ADVOCATE OF THE YEAR



**DR. ANNE HOBBS**

Juvenile Justice Institute, UNO  
Omaha



# OUR TEAM



**MELISSA MAYO**  
Executive Director



**TERESA RIESBERG**  
Associate Director of  
Marketing & Communications



**KARIMA AL-ABSY**  
Advancement and Quality  
Assurance Manager



**FRED WHITTED**  
Associate Director of  
Outreach & Engagement



**SUSIE OWENS**  
Director of Strategic  
Partnerships

## BOARD MEMBERS

**Matthew Enenbach, Board President**  
Kutak Rock LLP

**Kari O'Neill Potts, Board Vice President**  
Valmont Industries

**Jeremy Christensen, Board Secretary**  
Baird Holm LLP

**Justin Frauendorfer, Board Treasurer**  
Bland & Associates

**Scott Focht, Member At-Large**  
Omaha Public Power District

**Chris Rodgers, Past Board President**  
Douglas County & Creighton University

**George Achola, Burlington Capital**

**Moniki Gunn, Boys Town**

**Greg Gonzalez, Omaha Police Department, Retired**

**Daniel Gutman, Law Office of Daniel Gutman**

**Kevin Langin, FNBO**

**Dr. Amanda Levos, Grand Island Public Schools**

**Dani McCawley, SilverStone Group, a HUB  
International company**

**Juan Padilla, Canopy South**

**Carol Russell, Community Volunteer**

**Elizabeth Seacrest, Nebraska Legislature**

**Betsy Vidlak, Community Action Partnership  
of Western Nebraska**

## TRUSTEE EMERITUS MEMBERS

**Josh Barte, Past Board President**

**John Ewing, Past Board Vice President**

**Julie Hefflinger, Past Board President**

**Daniel Padilla, Past Board President**

**Ashley Robinson, Past Board President**

**Rick Spellman, Past Board Member**

**Mike Yanney, Founder**



# MENTOR

## NEBRASKA

---

**STAY CONNECTED**



@MENTORNebraska

#MentoringAmplifies

MENTORNebraska.org

### **MENTOR NEBRASKA**

1111 N 13th Street #126

Omaha, NE 68102

### **CONTACT**

Melissa Mayo

Executive Director

melissa@mentornebraska.org

402-715-4164



BIG BROTHERS BIG SISTERS  
OF THE MIDLANDS